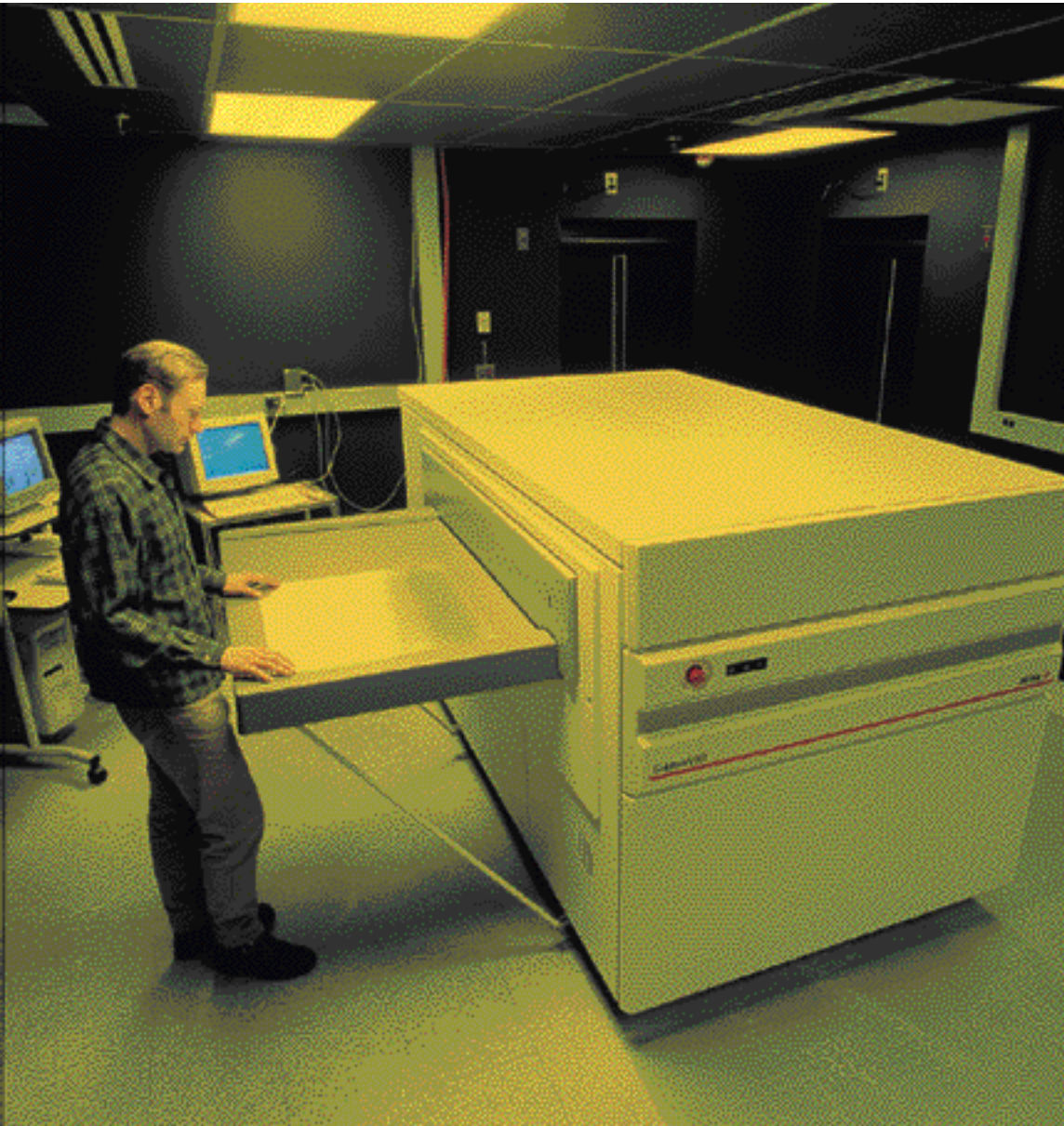


Galileo VS and VXT



Next-generation, high-performance visible-light systems

The Agfa Galileo family of digital plate manufacturing systems offers proven quality, speed, and reliability. Now Galileo brings you advanced violet laser imaging technology—enabling faster imaging, convenient yellow-safelight working conditions (shown above), and higher quality. Printing operations around the world have already chosen Galileo. With Galileo violet laser systems, Agfa has added new technical innovations that raise the productivity of your entire operation.

Fast imaging in 4-up and 8-up formats

With the Galileo violet-imaging family, you can select a 4-up or 8-up format, matching the way you work. Choose the fast performance of the Galileo VS, or the even faster Galileo VXT. Configure your Galileo system in an automatic or semi-automatic configuration. No matter which Galileo system you choose, you get Agfa's smart technology, workflow expertise, and state-of-the-art support.



AGFA 

AGFA. A SMARTER WAY.

New Agfa Lithostar Ultra-V digital plates optimize Galileo VS and Galileo VXT

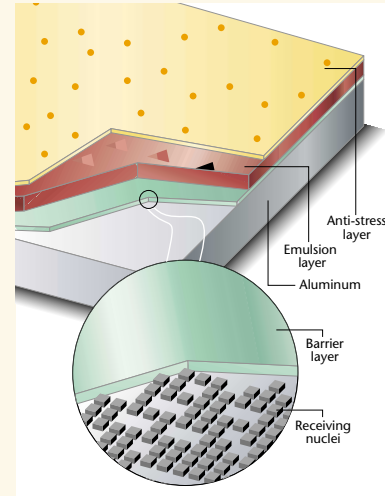
At Agfa, we design and manufacture innovative digital plate manufacturing systems—such as the Galileo VS and VXT—as well as the plates that they image. More than 1,000 engineers and scientists around the world collaborate on all aspects of our platesetters and plates, ensuring maximum optimization. When you choose Galileo, you benefit from this synergy, which results in higher quality, greater reliability, and better performance on press.

The ideal plate for Galileo violet-laser systems

As the world's leading manufacturer of digital plates, Agfa offers the widest range of plate types and technologies. We developed the ultrasensitive Lithostar Ultra-V—a high-speed

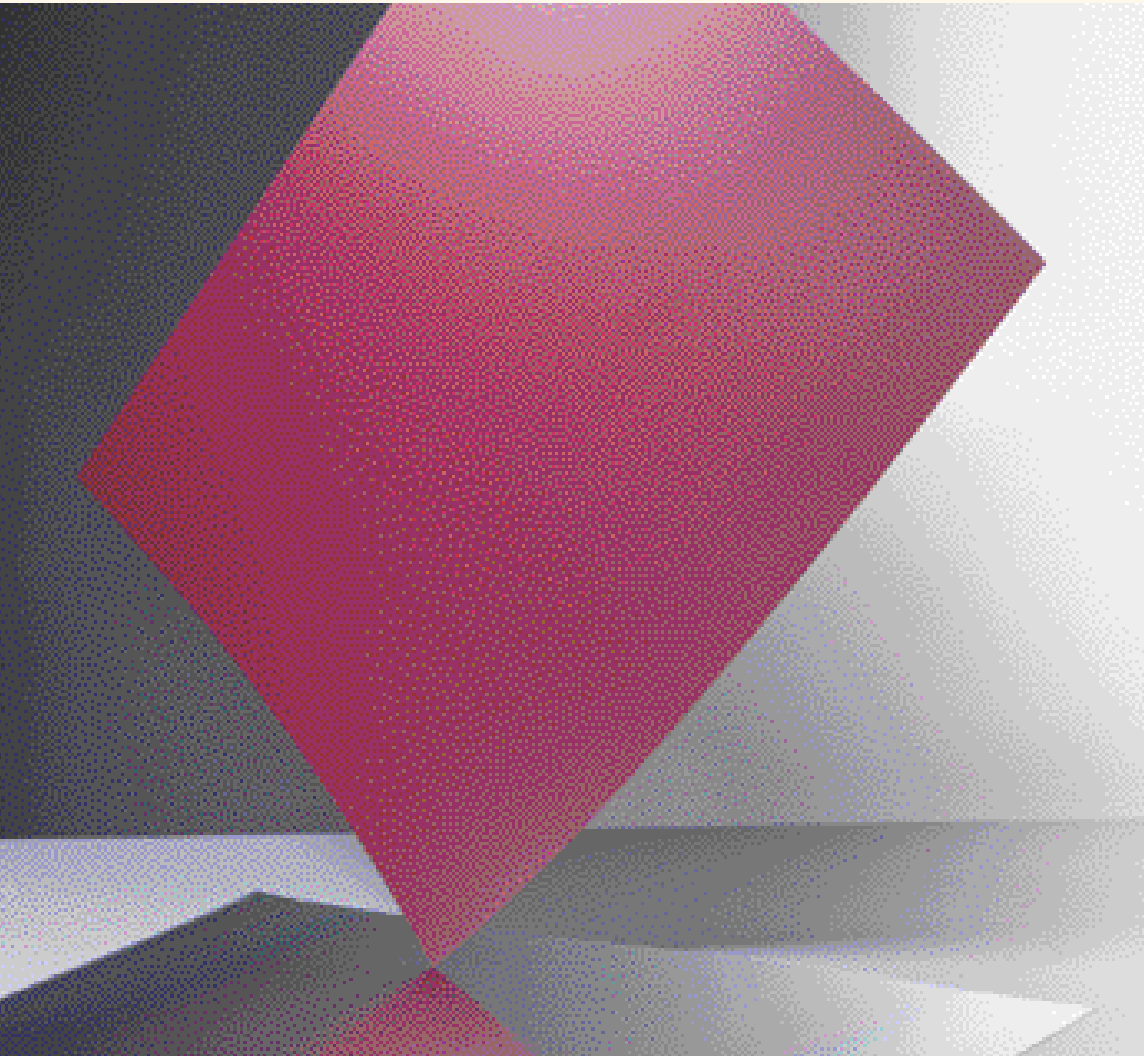
aluminum plate based on Agfa's proven silver-halide technology—to precisely match the exposure wavelength (400 nm) of the Galileo Violet laser family. Lithostar Ultra-V can be handled safely in near-daylight conditions with yellow safelights.

Lithostar Ultra-V is a high-sensitivity plate designed for ideal imaging with the shorter wavelength of a violet laser. The result is the hardest dot possible, excellent contrast and edge sharpness, fastest exposure times, and ideal performance on press. In these areas and others, Agfa has created a plate fine-tuned for optimal results with Galileo violet-laser systems—Lithostar Ultra-V.



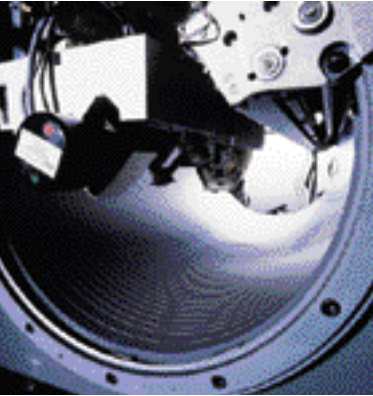
Agfa Lithostar Ultra-V features an HCl-grained and anodized aluminum substrate that provides the solid foundation for exceptional performance. Graining improves adhesion with the image layer, while anodizing improves durability and prevents scratching. Agfa Lithostar Ultra-V incorporates improved electrochemical graining and anodizing that enables the plate to deliver the hard dots and imaging sharpness necessary for high-resolution platesetting.

Agfa Lithostar Ultra-V's coating layer includes silver-halide particles evenly distributed and suspended in a gelatin layer. During exposure, the laser exposes and fogs the non-imaged areas, which are removed during development. In the image areas, the silver migrates downward through the emulsion and adheres to the aluminum substrate. In the final wash stage, any remaining traces of gelatin are washed away from the image area. Agfa Lithostar Ultra-V requires less washing, and any non-imaged silver is safely washed away and recovered for reuse.



Galileo VS and Galileo VXT

The Galileo VS and Galileo VXT deliver the powerful benefits of violet imaging—fast imaging speeds and throughput. The result is an efficient computer-to-plate environment that creates a steady flow of high-quality Lithostar Ultra plates. With Galileo VS and VXT, Agfa integrates this state-of-the-art imaging technology into a complete computer-to-plate solution that keeps productivity high throughout your operation.



The most advanced internal drum design in the world

All Galileo violet laser systems are based on Agfa's advanced internal drum design, which we spent more than 1.5 million engineering man-hours perfecting during the last decade. With this field-proven design at Galileo's core, you can be assured of the ultimate in precision—and excellent results every plate, every shift, year after year. Galileo's unique, heavyweight drum weighs more than 1,500 lb. (681 kg) for maximum stability even in busy production environments. The drum's generous format—up to 44.5 x 32.29" (1130 x 820 mm) enables fully-imposed 8-up plate production. For lock-tight plate hold-down throughout the imaging process, we combine our patented vacuum technology with a new drum surface of variable-depth grooves.

Violet laser enables faster imaging

The Galileo VS and VXT utilize a new, state-of-the-art violet laser diode operating at a frequency of 400 nm. This shorter wavelength enables faster imaging speeds because it uses a smaller spinner mirror. Smaller mirrors equal faster spinning, yielding exceptional imaging speeds. Galileo VS charts a fast 37,500 rpm, while Galileo VXT reaches even higher speeds at 55,000 rpms. And Galileo's proven IntelliTrack™ slide mechanism provides smooth motion for extremely precise imaging.

Designed for high reliability

The violet laser diode used in the Galileo VS and VXT is an extremely reliable, long-life laser source similar to lasers used in today's advanced electronic components, such as DVD players. Agfa partnered with leaders in this field to leverage this reliable technology for the graphic arts.

The violet laser is small, simple, and modular, enabling quick replacement if necessary. The violet laser diode is directly modulated, enabling the system to turn it on and off more quickly. And since it uses less power (an extremely small 5 mw), the laser generates less heat and can be cooled by air, without any supplementary cooling system. Plus, we performed comprehensive quality and reliability testing on the violet laser and overall imaging system, ensuring excellent



Choose the level of automation you need

The **fully automated** Galileo plate production system includes a Galileo violet laser platesetter, PlateManager, and an integrated online processor. This configuration is designed for high-end, high-throughput operations that require fully automated operation.

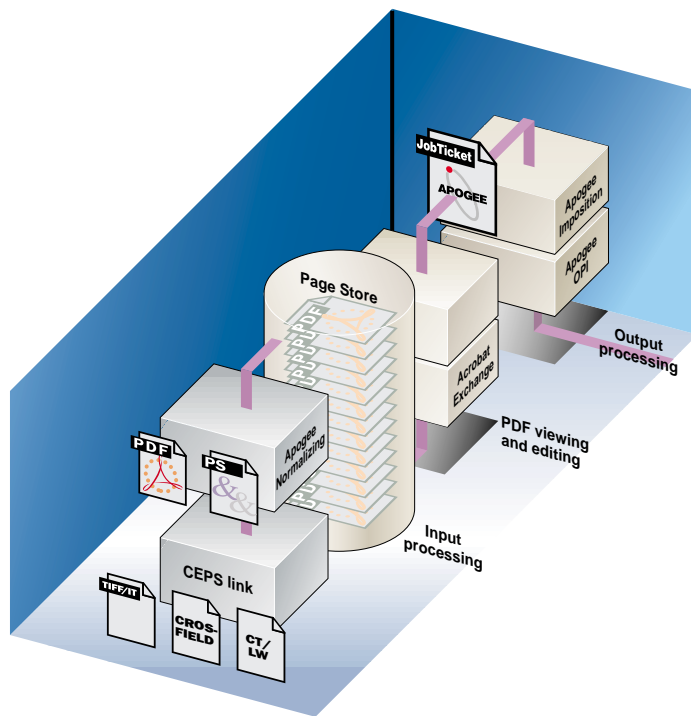


With the **semi-automatic** solution, the Galileo platesetter and an integrated online processor keep the plates flowing smoothly to your press. It's an ideal solution for operations that have lower plate throughput demands.



Apogee streamlines your workflow

Apogee Series2 — Agfa's next-generation PDF-based workflow system — continues to raise workflow efficiency and automation. Apogee gives you complete control of the entire workflow — from content creation to final printing. Apogee maximizes the efficiency of your Galileo system and all your other output devices by managing your all-digital workflow.



performance and reliability. The result of Agfa's simple, elegant design is a system that provides reliable, accurate imaging — all the time.

The convenience of violet laser imaging

Galileo violet-laser systems let you handle plates in yellow room lighting, enabling you to perform platesetting in a more convenient, multi-use room. This approach to imaging lets you integrate platesetting more smoothly into your operation. With Galileo VS and VXT, you get a more simple approach to computer-to-plate, one that saves time and makes life easier for your prepress operators.

Accurate plate placement

Galileo VS and VXT feature a patented 3-point registration system that automatically locates plates for accurate plate-to-plate image registration. Our innovative solution allows you to adjust the registration stop pins to match your current (and future) notching and bending systems. Advanced edge detection technology uses an electronic sensor to precisely locate

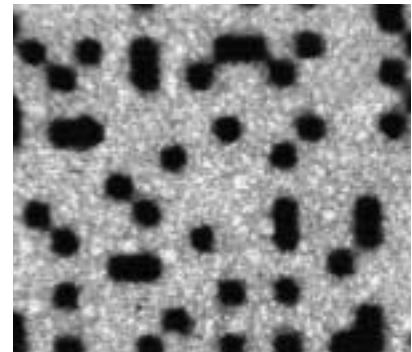
the outer edge of the plate throughout the process — resulting in superior consistency and image accuracy.

Efficient plate management

Galileo PlateManager — part of the fully automatic Galileo configuration — is designed specifically to simplify the time-consuming process of handling plates and preparing them for imaging. Automating this traditionally manual task also reduces the potential for damaging the plates. Plus, Galileo automatically removes slip sheets to eliminate dust. With PlateManager, you can choose up to four bins, enabling up to 400 plates of four different sizes or thicknesses to be online and ready to image.

Apogee streamlines your workflow

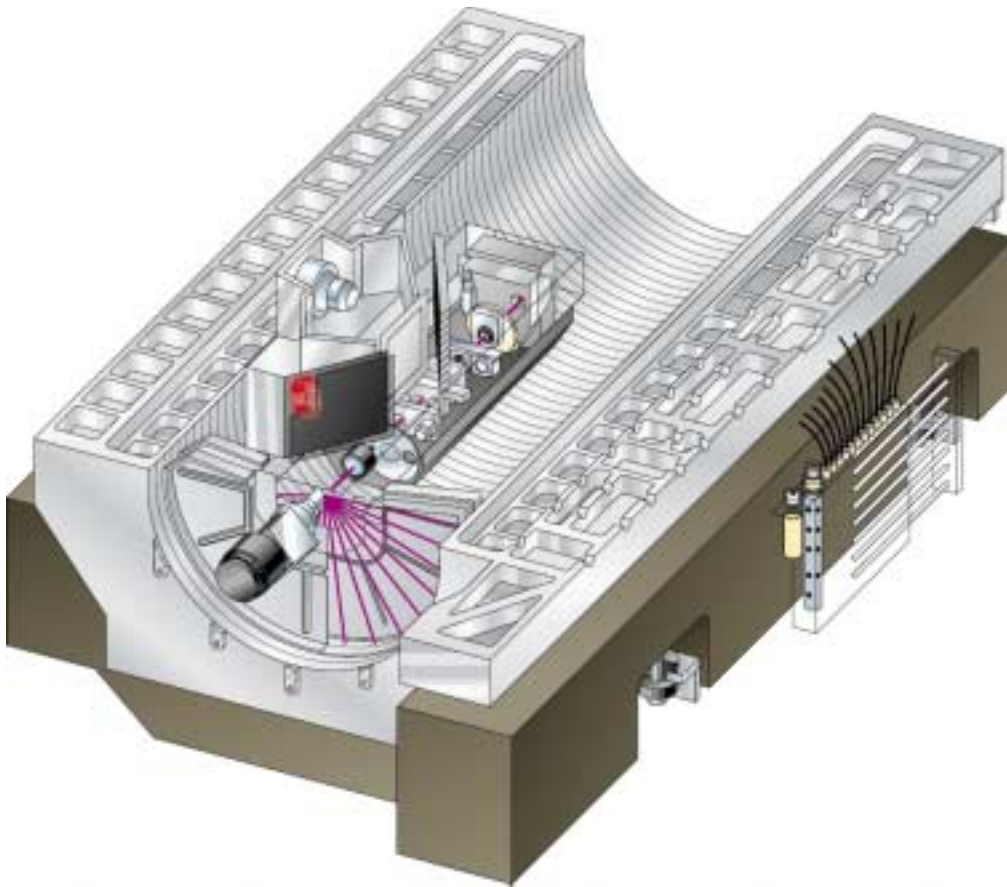
Computer-to-plate is more a process than a product. Our Apogee PDF-based workflow system makes Galileo a highly efficient component in your all-digital workflow. While other vendors are introducing initial solutions, Agfa continues to secure its reputation as the world's PDF workflow leader by refining and extending the capabilities of Apogee.



High-speed stochastic screening

Galileo users can choose from Agfa Balanced Screening and CristalRaster™ stochastic screening — world-class screening solutions that provide exceptional resolution and accuracy. With CristalRaster, Galileo fulfills the true promise of stochastic screening by directly imaging to the plate, without interim steps that compromise quality.

Galileo VS and VXT provide consistently high-quality screening over the full plate, and even allows users to mix screening technologies on a single signature. Galileo's predictable, "gaussian" spot geometry enables the best possible results with stochastic screening in a platesetting environment. And with Galileo, you can perform stochastic screening at all imaging speeds — without the compromised speeds of other solutions on the market today.



The Galileo VS and VXT use an efficient violet laser diode to image plates held securely by Agfa's patented internal drum design. Our IntelliTrack™ slide mechanism moves the imaging system smoothly across the entire length of the drum.

With Apogee Series2 — our second-generation solution — we have enhanced Apogee to make it even more versatile. For example, now Apogee streamlines the crucial link between content creators and the production team. Our new Apogee Create component takes workflow efficiency “upstream” to content creators, who can now provide reliable PDF files right from the start. And “downstream,” Apogee PrintDrive brings new automation to output management, enabling you to manage multiple output engines, make late-stage corrections, create different versions, double-burn plates, reprioritize jobs, and more.

Agfa provides world-class support

The simple, proven design of the Galileo family ensures a high degree of reliability from the start. But Agfa also offers the responsive support and expert service personnel necessary to maximize uptime. Every Galileo system is backed by Agfa Professional Support, our full line of service and support solutions, providing systems integration, workflow optimization, ongoing service, training, and much more. We bring you the largest service and support organization in the graphic arts industry — 2,000 trained and qualified technicians and consultants located around the world.



Agfa Odyssey brings service technology into the 21st century

We combine our field-proven expertise and global reach with the most advanced service technology in the world. Agfa Odyssey — our industry-leading remote diagnostic solution — allows our service technicians to perform a full range of diagnostics, upgrades, and other functions via a telecommunications link with you and your network. Odyssey supports full-duplex audio and video transmission capabilities, using a portable video camera to provide visual troubleshooting capability. The result? Fast resolution of any issues that may arise with your Galileo system — or any other aspect of your prepress operation. Only Odyssey gives you the confidence that comes from constant access to expert service and support.

Galileo Violet models

	Galileo Violet VS, 4-up	Galileo VS, 8-up	Galileo Violet VXT
Maximum plate size	29.33 x 26.61" (745 x 676 mm)	44.5 x 32.29" (1130 x 820 mm)	44.5 x 32.29" (1130 x 820 mm)
Maximum format	4-up	8-up	8-up
Spin motor	37,500 rpm	37,500 rpm	55,000 rpm
Input design	fast bandwidth	fast bandwidth	ultra bandwidth

Galileo Violet product specifications

Model	Galileo VS 4	Galileo VS	Galileo VXT
Imaging system	Violet laser diode (410 nm)	Violet laser diode (410 nm)	Violet laser diode (410 nm)
Spin motor	37,500 rpm	37,500 rpm	55,000 rpm
Maximum format	4-up, upgradable to 8-up in the field	8-up	8-up
Minimum plate size	17.72 x 14.5" (450 x 368 mm)	17.72 x 14.5" (450 x 368 mm)	17.72 x 14.5" (450 x 368 mm)
Maximum plate size	29.33 x 26.61" (745 x 676 mm)	44.5 x 32.29" (1130 x 820 mm)	44.5 x 32.29" (1130 x 820 mm)
Thicknesses supported	0.006 – 0.012" (0.152 mm – 0.305 mm)	0.006 – 0.012" (0.152 mm – 0.305 mm)	0.006 – 0.012" (0.152 mm – 0.305 mm)
Plates supported (metal)	• Lithostar Ultra LAP-v, and other 410 nm plates	• Lithostar Ultra-V, and other 410 nm plates	• Lithostar Ultra-V, and other 410 nm plates
Fully automated plate handling	• n/a	• Multi-stage pipeline for top performance • Online plate processing • Multiple plate supply capability via Galileo PlateManager • System provided with 1, 2, 3, or 4 plate bins, upgradeable to 4 in the field • Three different sized cassettes • Up to 400 plates on-line	• Multi-stage pipeline for top performance • Online plate processing • Multiple plate supply capability via Galileo PlateManager • System provided with 1, 2, 3, or 4 plate bins, upgradeable to 4 in the field • Three different sized cassettes • Up to 400 plates on-line
Semi-automated plate handling	• Multi-stage pipeline for top performance • On-line plate processing • Manual plate input	• Multi-stage pipeline for top performance • On-line plate processing • Manual plate input	• Multi-stage pipeline for top performance • On-line plate processing • Manual plate input
Fully automated plate loading	• n/a	Daylight-loading	Daylight-loading
Semi-automated plate loading	Yellow safelight-loading	Yellow safelight-loading	Yellow safelight-loading
Register system	• Accurate, adjustable 3-point registration system • Patented adjustable pin positioning • 2 electromechanical stop pins for gripper edge • 1 electronic sensor for edge detection	• Accurate, adjustable 3-point registration system • Patented adjustable pin positioning • 2 electromechanical stop pins for gripper edge • 1 electronic sensor for edge detection	• Accurate, adjustable 3-point registration system • Patented adjustable pin positioning • 2 electromechanical stop pins for gripper edge • 1 electronic sensor for edge detection
Screening technologies supported	• Agfa CristalRaster (21µ and above) • Agfa Balanced Screening • Adobe Accurate Screens	• Agfa CristalRaster (21µ and above) • Agfa Balanced Screening • Adobe Accurate Screens	• Agfa CristalRaster (21µ and above) • Agfa Balanced Screening • Adobe Accurate Screens
Maximum imaging rates	Sq./" cm2/ DPI min. min *Plate 1200 744 4799 0:56 min. 1800 496 3199 1:24 min. 2400 372 2399 1:52 min. *Plate: 25 5/8 x 21 5/8" (650 x 550 mm)	Sq./" cm2/ DPI min. min *Plate 1200 984 6347 1:18 min. 1800 656 4231 1:57 min. 2400 492 3173 2:36 min. *Plate: 40.5 x 31.5" (1030 x 800 mm)	Sq./" cm2/ DPI min. min *Plate 1200 1444 9314 0:53 min. 1800 963 6211 1:20 min. 2400 722 4657 1:46 min. *Plate: 40.5 x 31.5" (1030 x 800 mm)

The smart choice for computer-to-plate solutions

Only Agfa offers the full range of visible-light and thermal platesetters, RIPs, plates, processors, screening technologies, and other prepress systems and consumables necessary for your success. When you choose Agfa, you eliminate fingerpointing among multiple vendors.

With Agfa, one company can take responsibility for the complete workflow and provide convenient upgrade paths when you need to expand. For complete, high-quality platesetting solutions that give you a choice, look to Agfa—the world leader in computer-to-plate technology and expertise.

Argentina, (Paraguay and Uruguay), Región del Plata, Agfa-Gevaert, Argentina S.A. Tel.: 5411-4958-5767/5770, Fax: 5411-4983-5052
Australia, Agfa Graphic Systems Tel.: 03 9279 6300, Fax: 03 9899 0407
Austria, Agfa-Gevaert G.m.b.H. Tel.: 43-1-89112-3290, Fax: 43-1-89112-3204
Belgium, Agfa Belgium N.V. Tel.: 32-3-450-98-95, Fax: 32-3-450-98-88
Belgium, Agfa-Gevaert N.V., Direct Export Tel.: 32-3-444-7120, Fax: 32-3-444-7119
Brazil, Agfa-Gevaert do Brasil Ltda Tel.: 55-11-5188-6444, Fax: 55-11-5188-6419
Canada, Agfa Inc. Tel.: 416-241-1110 Ext: 4053, Fax: 416-241-5409 or 877-753-2432 toll free
Caribbean and Central America, Agfa Tel.: 305-592-6522, Fax: 305-593-8521
Chile, (Bolivia, Columbia, Equador, Peru, Venezuela), Agfa-Gevaert Ltda. Tel.: 56-2-360-7600, Fax: 56-2-360-7642
China, Agfa Hong Kong Ltd. Tel.: 852-2555-9421, Fax: 852-2555-2480
Czech Republic, Agfa s.r.o. Tel.: 420-2-6610-1623, Fax: 420-2-6610-1699
Denmark, Agfa-Gevaert A/S, Grafiske Systemer Tel.: 45-4326-6766, Fax: 45-4326-6701
Finland, Oy Agfa-Gevaert Ab Graafiset järjestelmät Tel.: 358-9-8878-378, Fax: 358-9-8878-278
France, Agfa-Gevaert S.A. Tel.: 33-14-732-7111, Fax: 33-14-732-7099
Germany, Agfa Deutschland Vert. mbH & Cie. Tel.: 49-221-5717-0, Fax: 49-221-5717-231
Greece, Agfa-Gevaert A.E.B.E. Tel.: 30-1-570-6500, Fax: 30-1-570-6700
Hungary, Agfa Tel.: 361-212-1540, Fax: 361-212-1574
Ireland, Agfa Ltd. Tel.: 353-1-450-6733, Fax: 353-1-456-5267
Israel, Agfa Graphics Ltd. Tel.: 972-3-9244301, Fax: 972-3-9246722
Italy, Agfa-Gevaert S.p.A. Tel.: 39-02-3074-220, Fax: 39-02-3074-429
Japan, Agfa-Gevaert Japan, Ltd. Tel.: 81-3-5704-3140, Fax: 81-3-5704-3089
Korea, Agfa Korea Ltd. Tel.: 82-2-2262-4200, Fax: 82-2-2274-9764
Luxembourg, Agfa-Gevaert S.A. Tel.: 352-44-20-441, Fax: 352-45-04-37
Malaysia, Agfa Malaysia Sdn. Bhd. Tel.: 60 3 7574200, Fax: 60 3 7574700
Mexico, Agfa de Mexico S.A. Tel.: 525-699-1400, Fax: 525-699-1402/1403
Netherlands, Agfa-Gevaert B.V. Tel.: 31-70-413-1211, Fax: 31-70-413-1585
New Zealand, Agfa-Gevaert New Zealand Ltd. Tel.: 64-9-443-5500, Fax: 64-9-443-8855
Norway, Agfa-Gevaert A.S. Tel.: 47-67 05 88 00, Fax: 47-67 05 89 65
Poland, Agfa Sp. Z.O.O. Tel.: 48-22-572-3940, Fax: 48-22-572-3969
Portugal, Agfa-Gevaert Lda Tel.: 351-21-414-6700 Fax: 351-21-414-6780
Singapore, Agfa Singapore Pte. Ltd. Tel.: 65-261-3389, Fax: 65-265-6559
South Africa, Agfa South Africa (Pty) Ltd. Tel.: 27-11-921-5911, Fax: 27-11-921-5548 or 5419
Spain, Agfa-Gevaert, S.A. Tel.: 34-93-476-7600, Fax: 34-93-476-7856
Sweden, Agfa-Gevaert AB Tel.: 46-8-793-0100, Fax: 46-8-793-0171
Switzerland, Agfa-Gevaert AG Tel.: 41-1-823-7111, Fax: 41-1-823-7376
Taiwan, Agfa Taiwan Co. Ltd. Tel.: 886-2-2516-8899, Fax: 886-2-2504-4819
UK, Agfa Gevaert Ltd. Tel.: 44 20 8231 4929, Fax: 44 20 8231 4957
USA, Agfa Corporation Tel.: 800-227-2780, Fax: 908-534-5151

Internet address:
www.agfahome.com
www.agfa.to1.com

© Copyright 2000 by Agfa Corporation.
 All rights reserved. Printed in USA.

AGFA, the Agfa rhombus, A Smarter Way, AgfaScan, AgfaWedge, Apogee, CristalRaster, DoubleBurn, Galileo, Lithostar Ultra, Mistral, N91, Phoenix, PlateManager, PlateStream, Polaris, PrintDrive, QuickFix, Talant, Thermostar, and Xcalibur are trademarks of Agfa Corporation or its affiliates which may be registered in certain jurisdictions. All other trademarks are property of their respective holders.

All product specifications are subject to change without notice. Appearance of equipment ordered may differ from that of equipment shown in photographs.

NFE6M

AGFA 

AGFA. A SMARTER WAY.